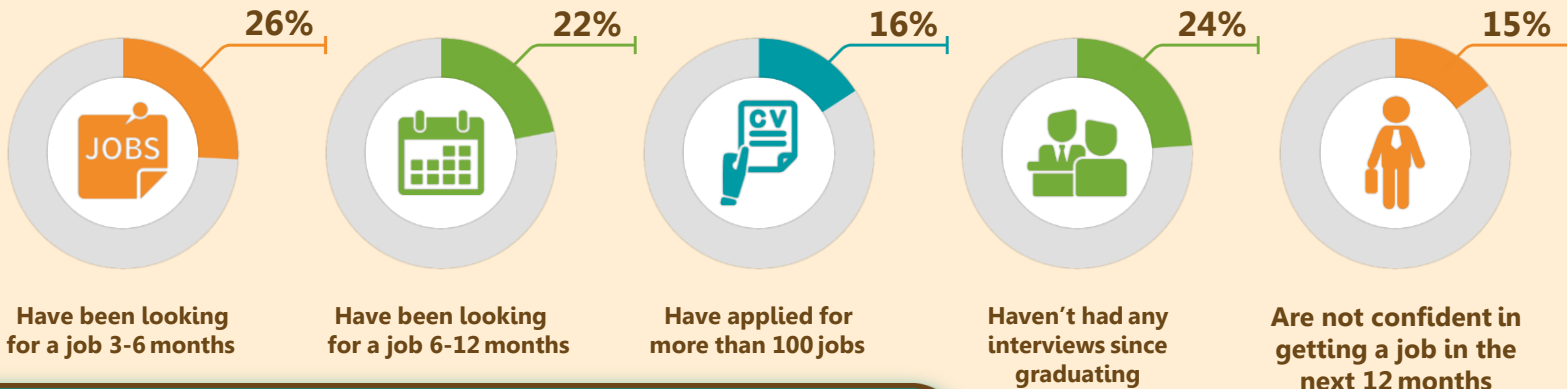
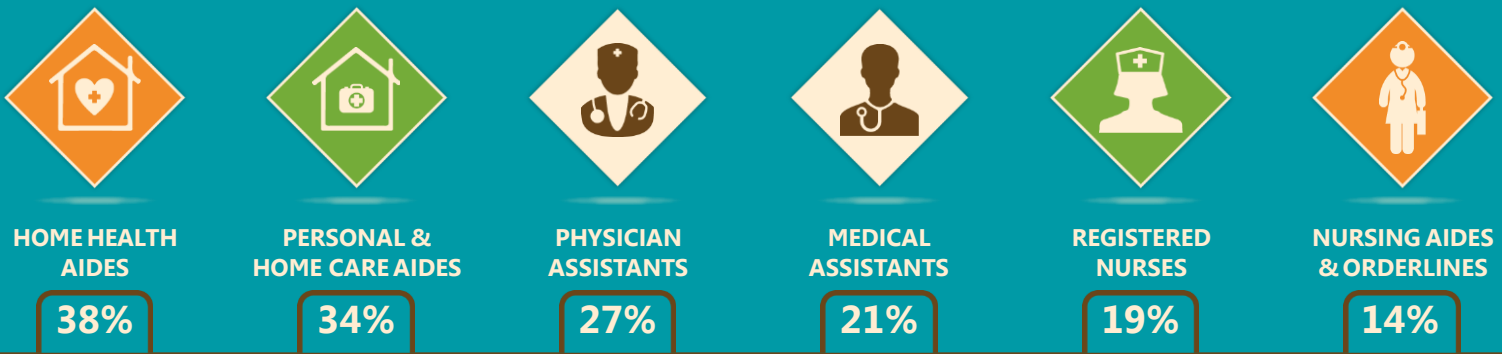


IT'S A DIFFICULT MARKET

AS THE RATE OF GROWTH SLOWS, IT'S NOT GETTING ANY EASIER FOR GRADUATES LOOKING FOR WORK



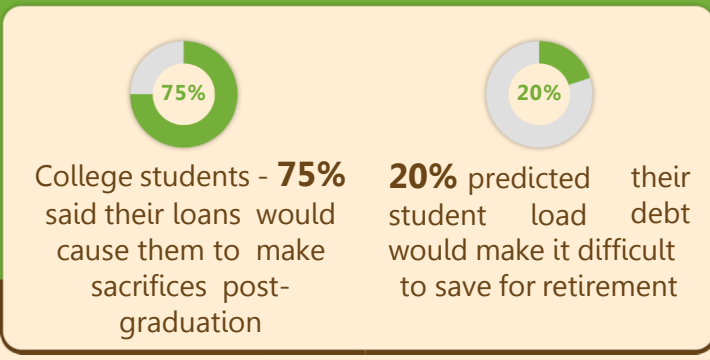
OCCUPATION GROWTH PREDICTIONS favor those entering healthcare, home care, telemedicine, and pharmaceuticals due to a rapid increase in the number of aging



BETWEEN 2003 AND 2013 EDUCATION COSTS INCREASED



WHILE STUDENTS LOANS



AND OUR ATTITUDES HAVE CHANGED OVER THE YEARS



2015 NCES.GOV DATA

BUT COMPETITION IS FIERCE (STUDENT ENROLLMENT)

GRADUATES BY PROFESSION 2014

Business	1,356,487
Natural sciences	674,931
Social sciences	560,477
Education	549,598
Engineering and related	544,042
Health professions	490,524

PROFESSION AVERAGE INCOME 2014

Engineering and related	\$ 64,299
Computer and information systems	\$ 59,790
Construction/electrical/transportation	\$ 55,000
Health professions	\$ 51,810
Business	\$ 50,657
Mathematics	\$ 50,360

● 76 MILLION ● 80 MILLION
○ 60 MILLION ● 69 MILLION

